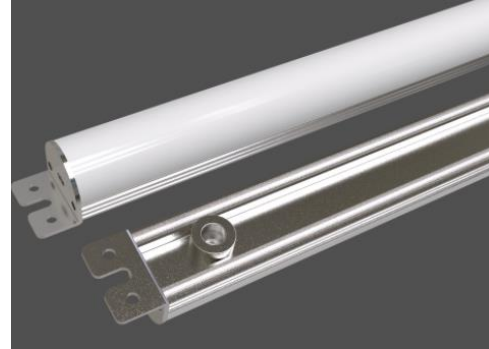


LED MAGNETIC RETROFIT STRIP

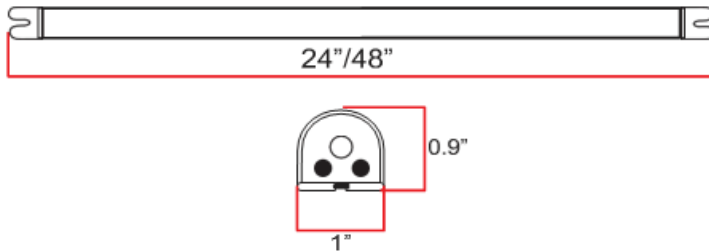
CADY@JAMESINDUSTRY.COM
US: (+1)973-960-1877

The LED Strip Retrofit is an energy efficient replacement for existing T12 and T8 strip fixtures and troffers. This kit is designed to distribute uniformed lighting within an aluminum extrusion lighting fixture



DIMENSIONS

CERTIFICATIONS



FEATURES

COMMON TECHNICAL DATA

- Simple and secure installation
- Quick replacement by high powered magnets
- Quantity of Kit in one troffer fixture: 1-4
- Comes with quick connects for easy install
- Uniformed lighting distribution
- Minimize labor and recycling costs
- 5 Year Manufacturer's Warranty

Color Temperature	3000K-5000K
Beam Angle	120°
CRI	> 80
Operation Temperature	-30°C to 40°C
Efficiency	> 110LPW
Input Voltage	AC100-277V/347V
Frequency	50-60Hz
Power Efficiency Factor	90%
Rated Life	50,000 hours
Power Factor	More than 0.98
LED Type	SMD 2835
Housing	Aluminum/PC

WARRANTY

This product has a warranty for a period of 5 years from the date of purchase. The warranty is invalid in the case of improper installation, tampering, or removal of the Q.C. date label. Installation in an improper working environment or installation not according to the current edition of the National Electric Code also invalidates the warranty. Should this product fail during the warranty period, it will be replaced free of charge, subject to correct installation and return of the faulty unit. James® does not accept responsibility for any installation costs associated with the replacement of this product. This warranty is in addition to the statutory rights in the country of purchase. James® reserves the right to alter specifications without prior notice.

Contact: Cady Liu

Mobile : (973)960-1877

Email : Cady@jamesindustry.com

LED MAGNETIC RETROFIT STRIP PRODUCT SPECIFICATION

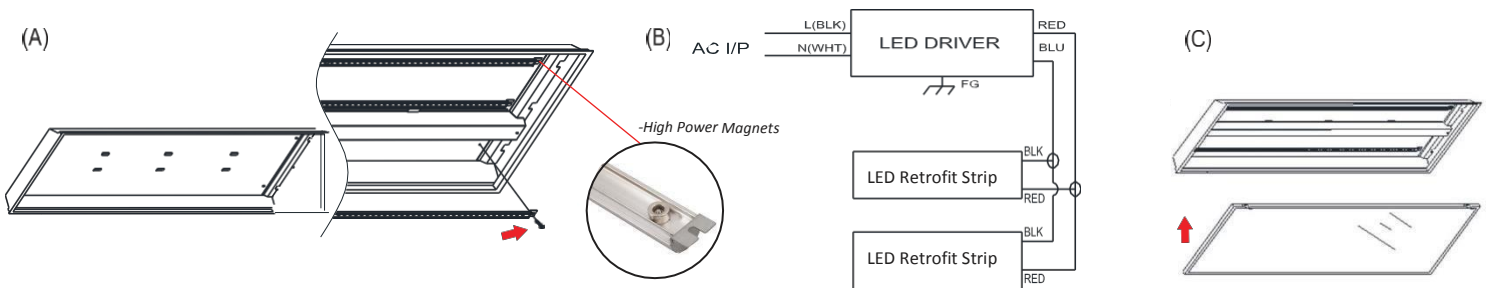
CADY@JAMESINDUSTRY.COM
US: (+1)973-960-1877

Model Number	Length	Wattage	Color	Efficacy	Multiple Driving Type	Driver	Wire Input
ZY-10W600 BONS	2FT	10W	4000K/5000K	118 lm/W	One driver for 2,3 or 4 Magnetic Strips	External	One End
EV15W600IENS	2FT	15W	4000K/5000K	128.3 lm/W			
ZY-10W1200 BONS	4FT	10W	4000K/5000K	142.48 lm/W	One driver for 2,3 or 4 Magnetic Strips	External	One End
ZY-15W1200 BONS	4FT	15W	4000K/5000K	110 lm/W	One driver for 2,3 or 4 Magnetic Strips	External	One End
ZY-20W1200 BONS	4FT	20W	4000K/5000K	118 lm/W	One driver for 2 or 3 Magnetic Strips	External	One End

INSTALLATION INSTRUCTIONS

Retrofit Procedure:

1. Turn OFF power to the fixture at the breaker panel before installation.
2. Open the diffuser from the light fixture.
3. Remove existing lamps, lamp holder, socket brackets, ballast cover, and electronic ballast(A).
4. Secure LED Retrofit Strips with attached high power magnets and self-tapping screws (A).
5. Place LED Driver in place of the removed electronic ballast and secure with self-tapping screws.
6. Wire LED Retrofit Strip and LED Driver accordingly following the wiring diagram (B).
7. Place the original ballast cover back and install lens and frame (C).
6. Switch ON power to the fixture at the breaker panel.



CAUTION

- Risk of fire- do not install this lamp in a pre-heated luminaire.
- Risk of electric shock- make installation with gloves.
- Use only in place of fluorescent lamps specified on label.
- These lamps are not to be used with a light dimmer.
- If the lamp or luminaire exhibits undesirable operation (i.e. buzzing, flickering, etc.), immediately turn off power and remove the lamp from luminaire and contact manufacturer.
- Do not make mass installation before sample testing.